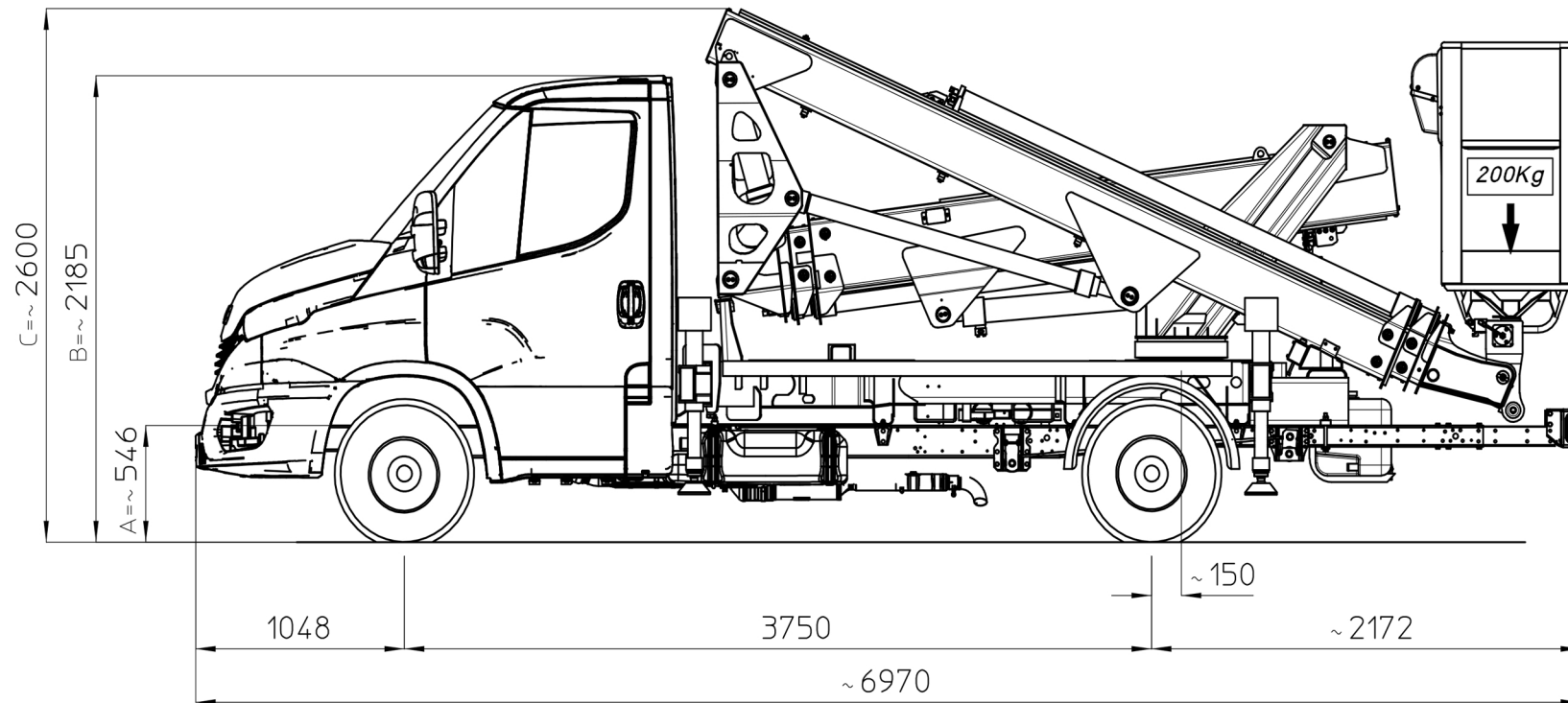


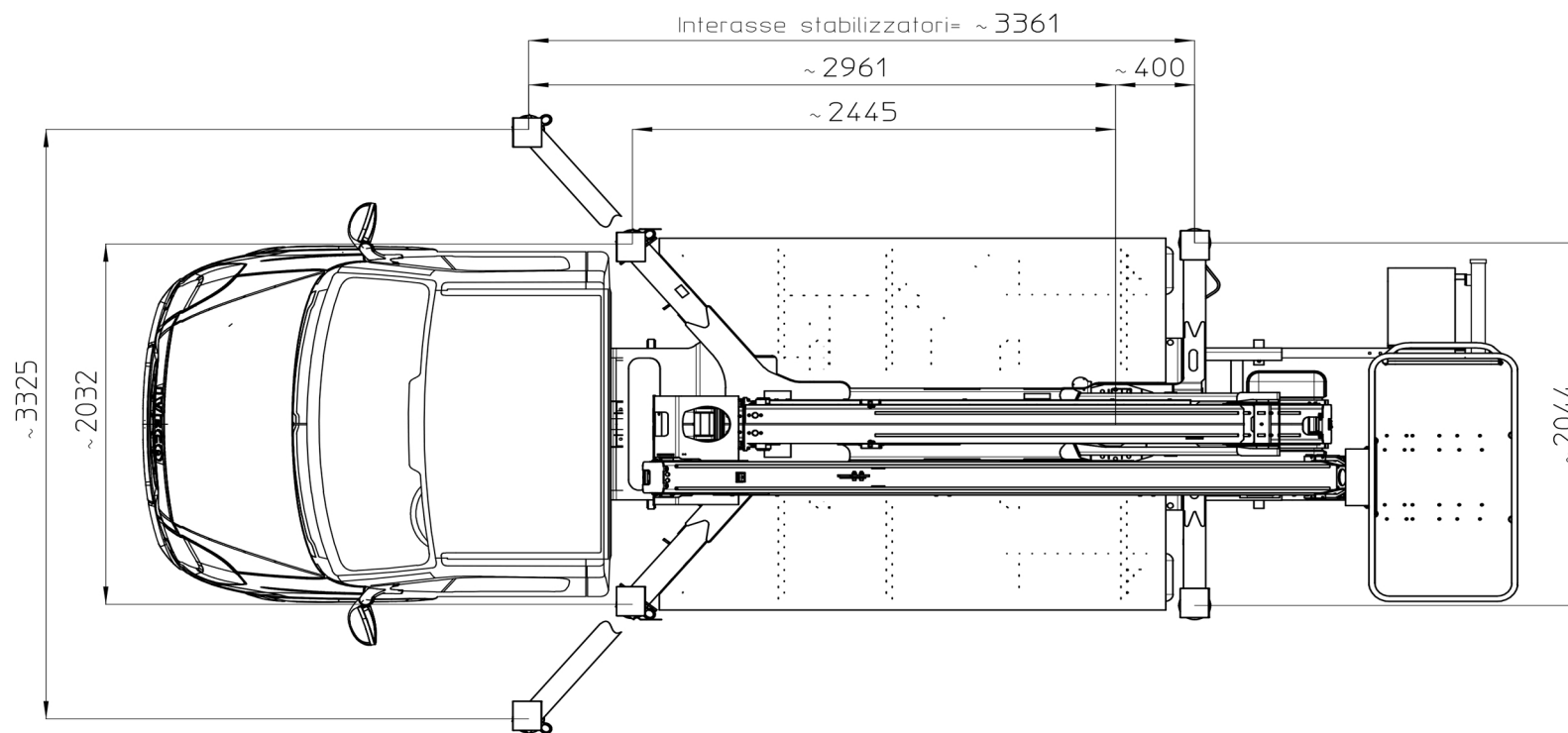
MULTITEL MX 210 - Iveco Daily 35S14H Euro6D

Ingombro veicolo



MULTITEL MX 210 - Iveco Daily 35S14H Euro6D

Ingombro veicolo



MULTITEL MX 210

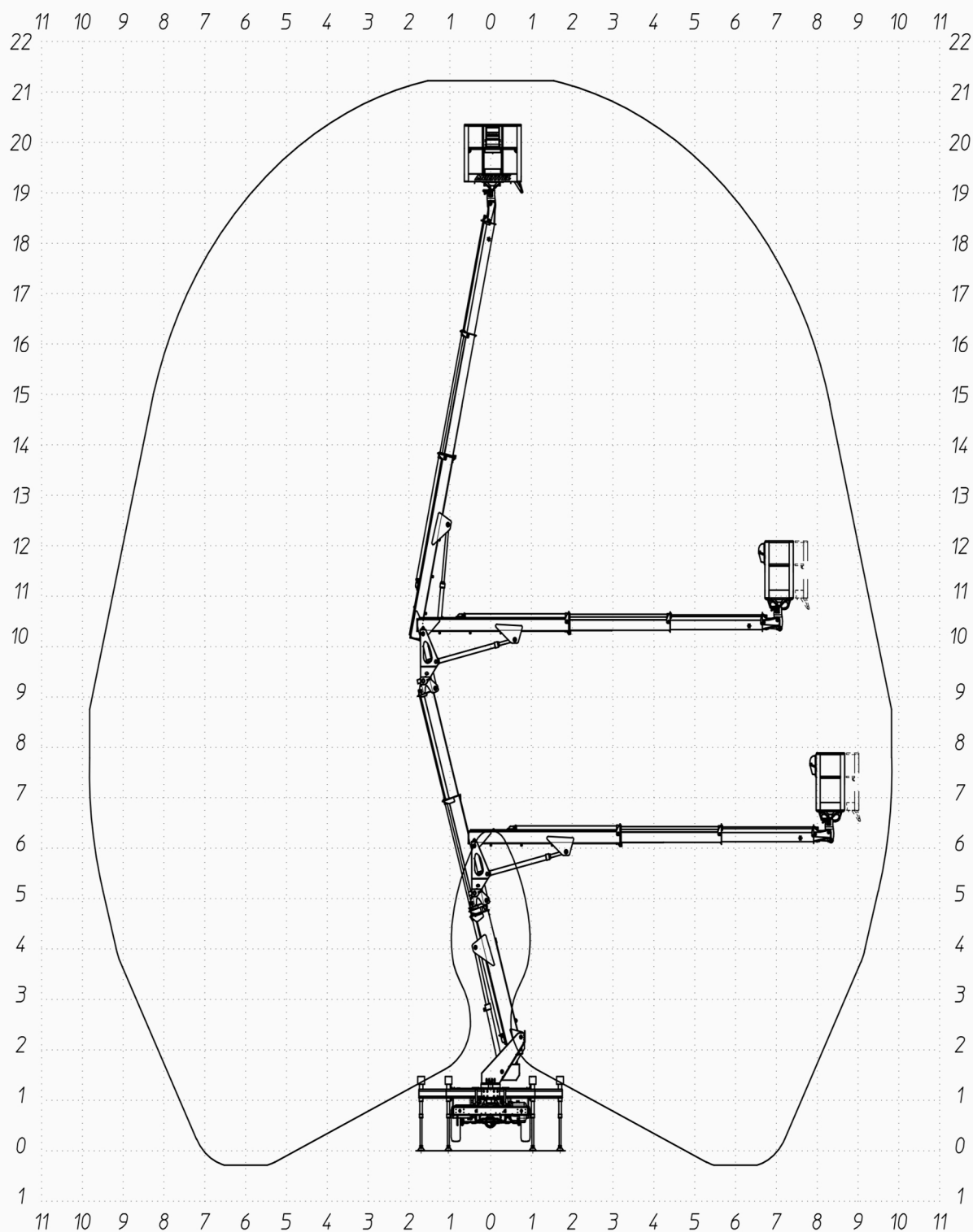
200 kg

80 kg

Sbraccio di lavoro, completamente estesi

8.2 m $\pm 5\%$

9.8 m $\pm 5\%$

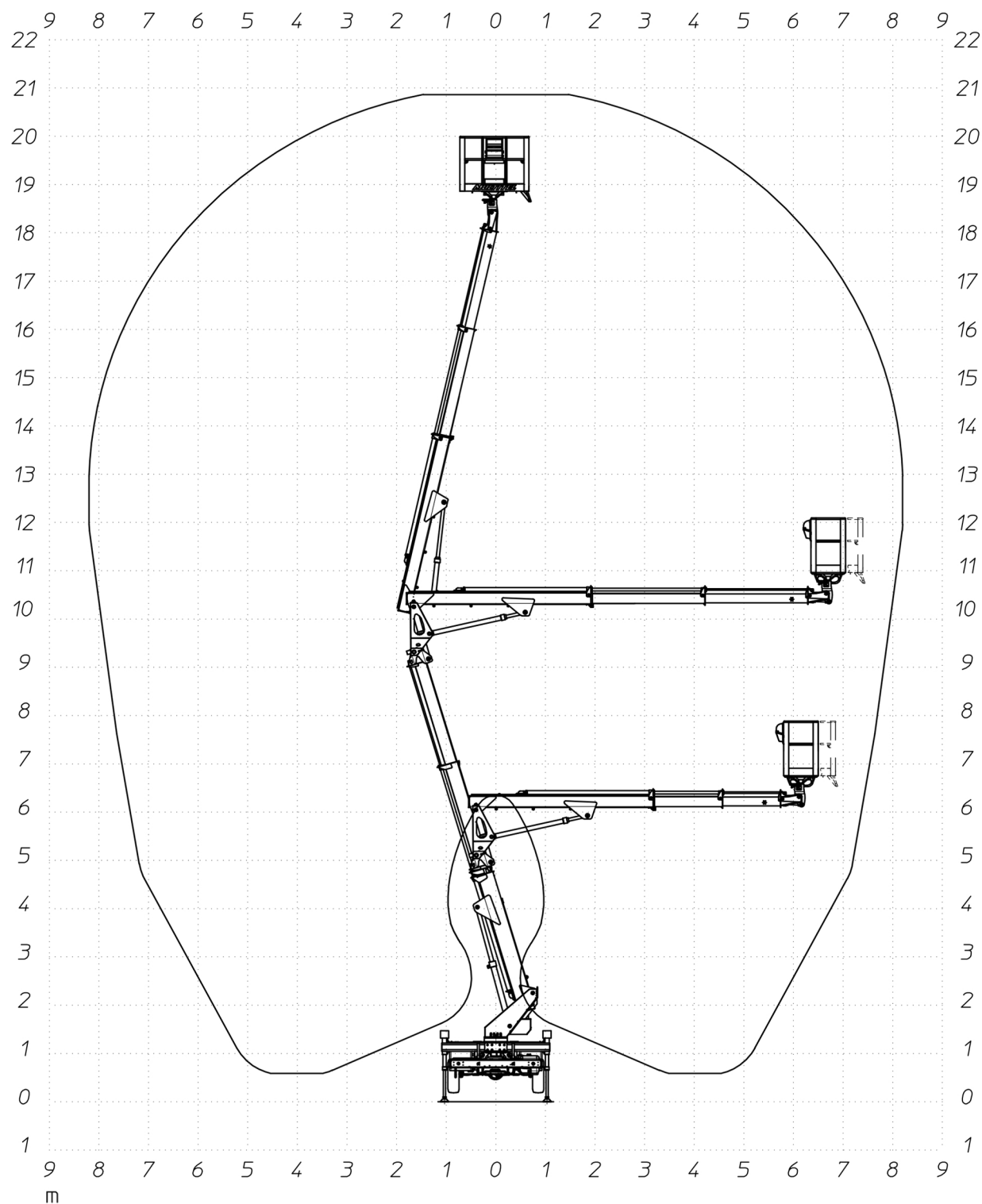


MULTITEL MX 210

200 kg

80 kg

Sbraccio di lavoro, stabilizzatori in sagoma 8.2 m $\pm 5\%$ 9.8 m $\pm 5\%$



MULTITEL MX 210 - Iveco Daily 35S14H Euro6D

Ingombro stabilizzazione

